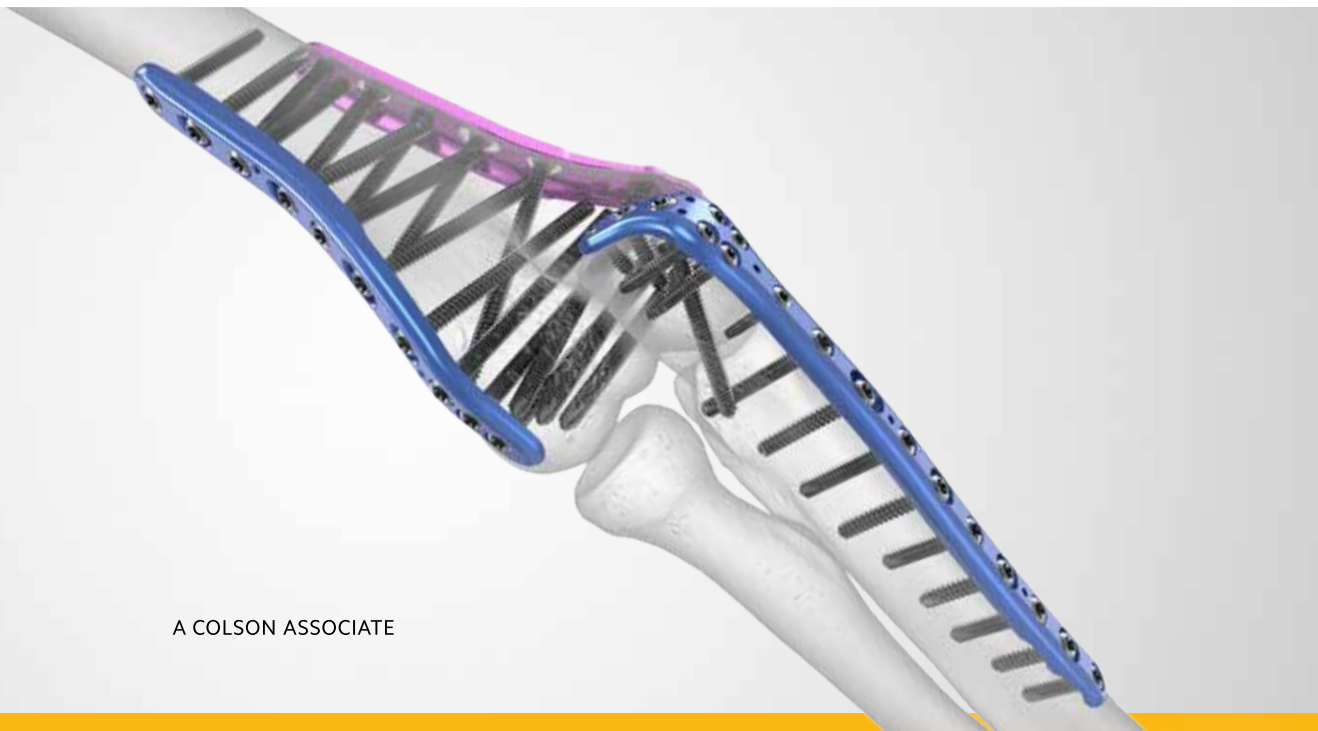


Product Overview



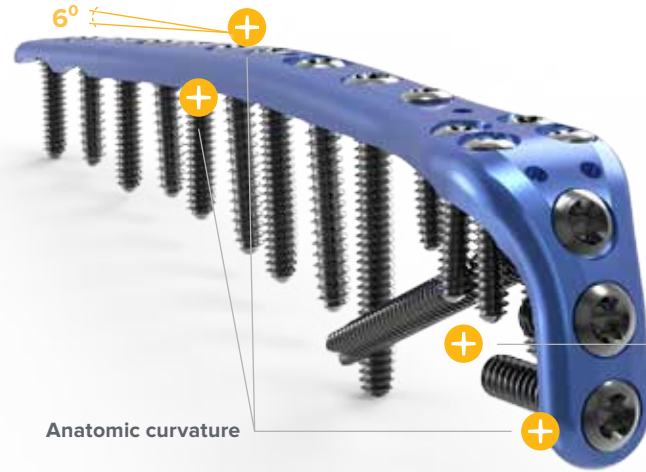
A COLSON ASSOCIATE



Acumed® Elbow Plating System

The Acumed Elbow Plating System offers multiple fixation options for fractures of the distal humerus, olecranon, and coronoid, as well as osteotomies of the olecranon.

The Acumed system was the first elbow plating system to offer precontoured, parallel distal humerus plates. Long screws in the Lateral Column Plate are designed to interdigitate with screws from the Medial Column Plate, providing a parallel construct for the stabilization of distal humerus fractures.



Anatomic curvature



Plates

Olecranon Plate

Prongs on plate allow it to sit on top of the triceps tendon, minimizing the need for a triceps split.

Anatomic curvature includes lateral tilt in the proximal region, distal lateral bow, and 6° proximal ulnar dorsal angulation (PUDA). Proximal screw cluster is engineered to provide stability.

Divergent locking screw trajectory is designed to avoid other screws, regardless of the screw length selected.



Coronoid Plate

Designed to buttress the coronoid while also counteracting the tendency of the elbow to subluxate. An offset screw hole targets fragments of the sublime tubercle.

Plates

Medial Column Plate

Designed to wrap around the medial epicondyle and extend up the condylar ridge. This fixation is maximized when screws in the articular fragments interdigitate with screws from the Lateral Column Plate.

Lateral Column Plate

Enables longer screws in the articular fragments to interdigitate with the screws from the medial side.

Posterolateral Plates

Engineered for isolated capitellar fractures and for a 90-90 plate application.

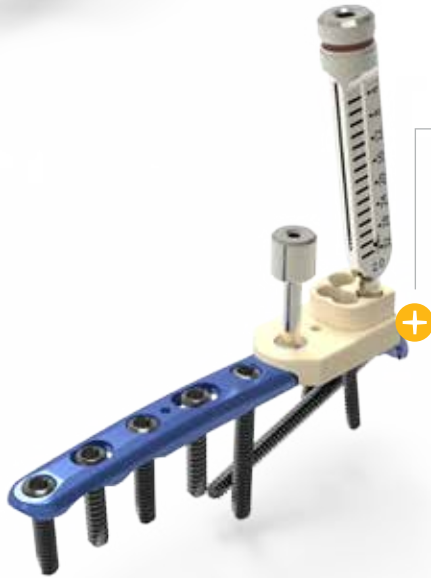




Instrumentation

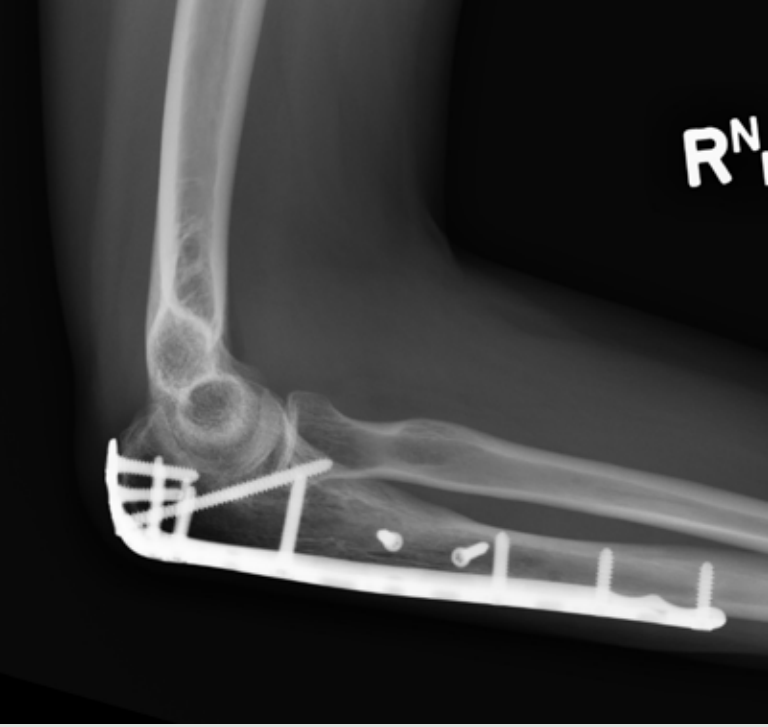
Olecranon Osteotomy Cutting Jig

Provides four location options to start the chevron osteotomy of the olecranon and also allows for predrilling of the proximal and distal screw holes of the olecranon plates.



Targeted Drill Guide

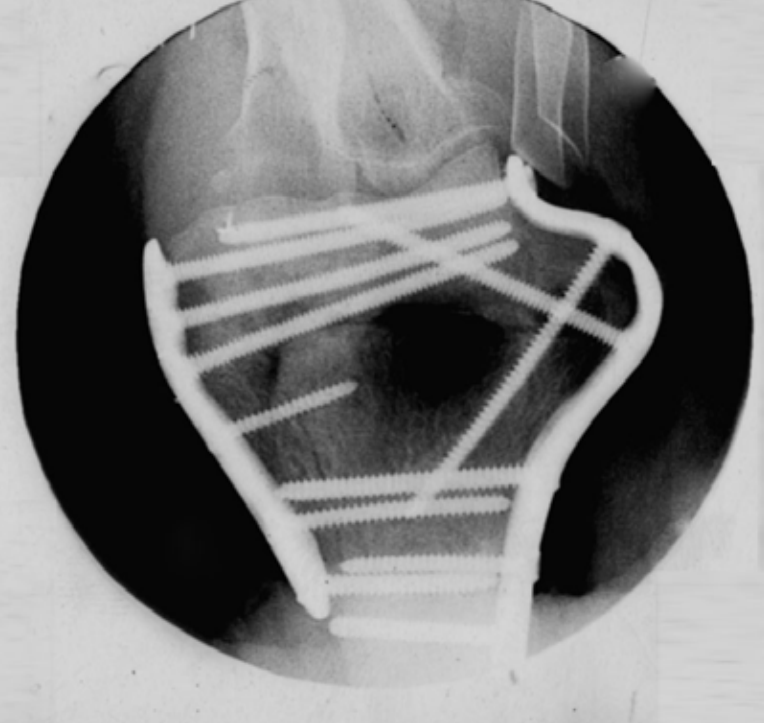
Aids in threading the locking drill guides into the proximal cluster of the olecranon plates.



9-hole extended olecranon plate



Medial view of coronoid fracture, with coronoid plate



Distal humerus plates



Lateral view of radial head replacement, with ARH and olecranon fracture fixation with olecranon plate



Acumed Headquarters
5885 NW Cornelius Pass Road
Hillsboro, OR 97124

Office: +1.888.627.9957
Office: +1.503.627.9957
Fax: +1.503.520.9618
www.acumed.net

ELB10-00-B | Effective: 2016/12 | © 2016 Acumed® LLC

These materials contain information about products that may or may not be available in any particular country or may be available under different trademarks in different countries. The products may be approved or cleared by governmental regulatory organizations for sale or use with different indications or restrictions in different countries. Products may not be approved for use in all countries. Nothing contained on these materials should be construed as a promotion or solicitation for any product or for the use of any product in a particular way which is not authorized under the laws and regulations of the country where the reader is located. Specific questions physicians may have about the availability and use of the products described on these materials should be directed to their particular local sales representative. Specific questions patients may have about the use of the products described in these materials or the appropriateness for their own conditions should be directed to their own physician.

Acumed® is a registered trademarks of Acumed LLC